



智能供配电

Intelligent Power Supply And Distribution

安徽博微智能电气有限公司 ANHUI ECRIEEPOWER CO.,LTD

地址：中国合肥高新技术产业开发区香樟大道168号
No.168 Xiangzhang Road,High & New Technology Development Zone,
Hefei Anhui China

官网Web: www.ecrieepower.com

邮编Zip: 230088



本报告书采用环保印刷方式。
This book is printed in a environmental protection way.

印刷纸使用含有管理良好的森林资源的原料的FSCTM认证纸。
The printing paper is with FSCTM certificate.

印刷油墨采用环保的植物性墨。
The printing ink is plant oil-based one for environmental protection.

公司简介

Company Profile



安徽博微智能电气有限公司是国家级高新技术企业，专业从事半导体智能供配电、智能医疗管理终端、汽车电子等产品及系统的研发、生产、销售的科技型企业。

公司拥有超百人科研团队，专利和软著共计超130项，拥有省级企业技术中心、工业设计中心。先后获得省级专精特新冠军企业、“创新创业奖创新主体奖”、高成长“瞪羚”企业、企业“江淮硅谷”创新团队、数据中心产品创新奖等荣誉称号，连续多年荣获省工业设计中心，合肥高新区瞪羚培育企业称号。

博微智能合肥工厂拥有UL&CSA认可的测试实验室，产品符合SMEI、UL、TUV等多项国际国内权威认证。产品广泛应用于半导体、医疗装备等领域。

Anhui Ecriepower Co., Ltd. is a national high-tech enterprise, specialising in the research and development, production and sales of intelligent power supply and distribution, intelligent medical management terminal, automotive electronics and other products and systems.

The company has a research team of more than 100 people, with more than 130 patents and soft writings, a provincial enterprise technology centre and an industrial design centre. The company has won the titles of Provincial Specialized and Innovative (Champion) Enterprise, ‘Innovation and Entrepreneurship Award’, high growth ‘gazelle’ enterprise, enterprise ‘Jianghuai Silicon Valley’ innovation team, data centre product innovation award, etc. For many years, the company has been awarded the title of provincial industrial design centre and gazelle cultivation enterprise in Hefei Hi-tech Zone.

The Hefei factory of Ecriepower has UL & CSA approved testing labs, and its products comply with many international and domestic authoritative certificates, such as SEMI, UL, TUV, etc. The products are widely used in semiconductors, medical equipment and other fields.



全球业务
Global Business



四大技术平台

Four Technology Platforms

变压器 (半导体设备专用) TRANSFORMER

R型变压器

R-core Transformer

功率范围 Power range

单项变压器 Single Phase: 3VA-6,000VA

三项变压器 Three Phase: 10VA-10,000VA

优势 Strength

体积小、工艺美观、低漏磁、励磁电流小、高效率、低温升、低损耗、均衡性高、无噪音。

Small size, beautiful workmanship, low magnetic leakage, low excitation current, high efficiency, low temperature rise, low loss, high equilibrium, and no noise.



EI 变压器

EI Transformer

功率范围 Power range

1VA-1000KVA

优势 Strength

性价比高、整体结构为方形、结构紧凑、外形美观，功率范围广、用途广泛。

Cost-effective, the overall structure of the square, compact, beautiful appearance, wide range of power, wide range of uses.



环形变压器

Toroidal Transformer

功率范围 Power range

单相变压器 Single Phase: 10VA-6000VA

优势 Strength

高效、低损耗、尺寸小、重量轻、低漏磁、无噪音易于安装。

High efficiency, low loss, small size, light weight, low magnetic leakage, no noise, easy to install.



高频电感 (半导体设备专用) High Frequency Inductors

效率最高、速度最快，且低耗环保的电磁感应元件。

The most efficient and fastest electromagnetic induction element with low consumption and environmental protection.

特征 Features

- 可按照客户要求定制。
Customizable based on client needs.
- 产品设计和制造工艺成熟，可简化设备的结构，提高设备的可靠性和稳定性。
The product design and manufacturing process is mature, which can simplify the structure of the equipment and improve the reliability and stability of the equipment.
- 有滤波，振荡，延迟，陷波等作用。
Filtering, oscillating, delaying, trapping, etc.
- 主要用于医疗梯度电源，射频电源等产品中。
Mainly used in medical gradient power supply, RF power supply and other products.



高频变压器



梯度电源



高频电感

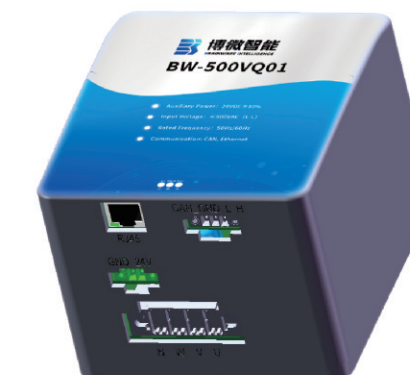


射频电源

550V电压采集模块 (半导体设备专用) 550V Voltage Acquisition Module

参数 Parameters

型号 Model Number	BW500VQ01
辅助电流 Auxiliary Current	24VDC±10%
输入电压 Input Voltage	550VAC (L-L)
事故记录 Accident Record	过压、欠压、不平衡、缺相、错相 Overvoltage, undervoltage, unbalance, phase loss, phase reversal
通讯方式 Communication Method	CAN通讯、以太网配套Web显示 CAN Communication, Ethernet with Web Display
适用海拔 Applicable Altitude	≤5000m



交流电源分配单元 (半导体设备专用) AC Power Distribution Unit

该电源分配单元 (PDU) 可配置接收多种电压三相交流电源 (电压值190V/200V/208V/230V/240V/380V/400V/416V/460V/480V), 输出三相208V交流电源 (星形)。PDU主要用于半导体测试设备和封装设备的供电。

PDU由一个主电路和一个控制电路组成。

主电路由多个断路器和一个隔离变压器构成, 控制电路由直流电源和一个EMO开关构成, 支持远程关机功能。

运用: 半导体测试系统

This Power Distribution Unit (PDU) can be configured to accept a variety of three-phase AC power supply voltages (including 190V, 200V, 208V, 230V, 240V, 380V, 400V, 416V, 460V, and 480V) and outputs three-phase 208V AC power (wye configuration). The PDU is primarily used for supplying power to semiconductor testing and packaging equipment.

The PDU consists of a main circuit and a control circuit.

The main circuit is composed of multiple circuit breakers and an isolation transformer, while the control circuit includes a DC power supply and an EMO switch, supporting remote shutdown functionality.

Application: Semiconductor testing systems.

参数 Parameters

额定功率 Rated Power	1kVA~100kVA
输入电压 Input Voltage	190V/200V/208V/230V/240V/380V/400V/416V/460V/480V (DELTA)
输出电压 Output Voltage	208/120VAC WYE
频率 Frequency	50/60Hz
满足 Compliance	TUV, CE

特征 Features

- 电压匹配与兼容**
Voltage Matching & Compatibility
匹配电网电压、多电压场景适配
Matches grid voltage and supports multi-voltage scenarios.
- 电气隔离与抗干扰**
Electrical Isolation & Noise Immunity
隔离电网干扰、抑制共模噪声
Isolates grid interference and suppresses common-mode noise.
- 电源稳定与设备保护**
Power Stability & Equipment Protection
缓冲电压波动、过载保护配合
Buffers voltage fluctuations and provides coordinated overload protection.



三相电源箱 (半导体设备专用) Three-Phase Power Distribution Box

参数 Parameters

额定功率 Rated Power	1VA-500kVA
输入电压 Input Voltage	208VAC-480VAC
空载电压 No-Load Voltage	400V±3%
联结组别 Vector Group	Dyn5



整流电源箱 (半导体设备专用) Rectifier Power Supply Unit

参数 Parameters

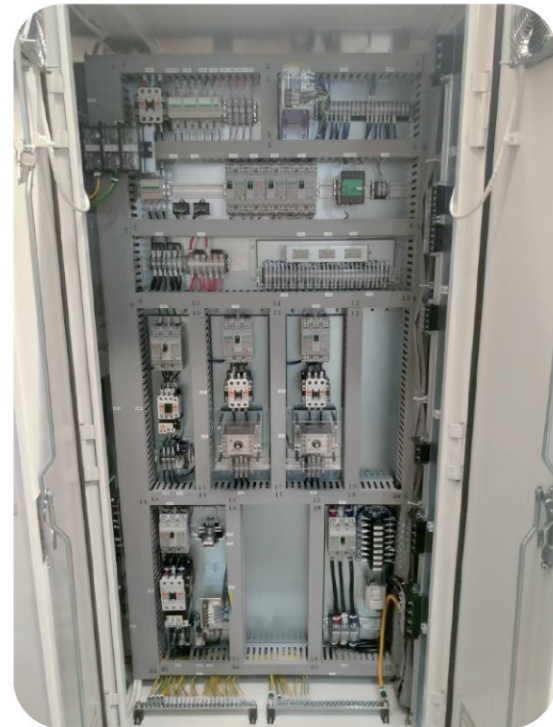
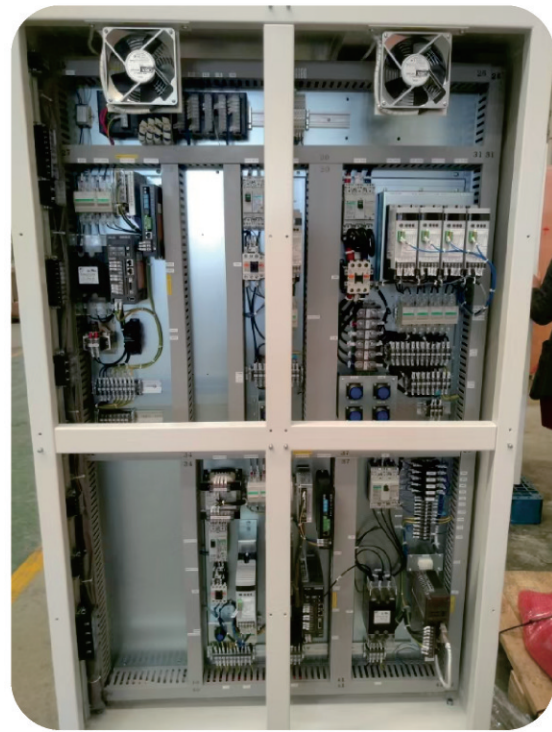
额定功率 Rated Power	1VA~200kVA
输入电压 Input Voltage	208VAC-480VAC
输出电压 Output Voltage	400VAC±2%,70VDC±3%,48VDC±3%
联结组别 Vector Group	Dyn5



控制柜 (半导体设备专用) **Control Cabinet**

高安全性、功能性和灵活性的解决方案，便捷的成套应用能够充分满足半导体设备配电和控制应用需求

A solution with high security, functionality, and flexibility, offering convenient integrated applications that fully meet the power distribution and control requirements of semiconductor equipment.



高频PDU (半导体设备专用) **High Frequency PDU**

高频 PDU 电源以高频 AC/DC DC/DC 为核心，既能实现输入输出之间的电气隔离，又能自动稳压，维持输出稳定。
The high frequency PDU takes the high frequency AC/DC DC/DC as the core, which can not only realize the electrical isolation between the input and output, but also can stabilize the voltage automatically and maintain the output stability.



特点

- 高频PDU电源以高频AC/DC DC/DC为核心，既能实现输入输出之间的电气隔离，又能自动稳压，维持输出稳定。可以减少总的输出功率，有利于减小工频变压器体积和重量，从而减小整个系统的体积和重量。
The high frequency PDU takes the high frequency AC/DC DC/DC as the core, which can not only realize the electrical isolation between the input and output, but also can stabilize the voltage automatically and maintain the output stability. The total output power can be reduced, and the volume and weight of the power frequency transformer can be reduced, thus the volume and weight of the whole system can be reduced.
- 实时电压和电流采集、传输、显示 Real-time voltage and current acquisition, transmission, display
- 监测远程控制和通信 Monitor remote control and communication
- 故障预警 Fault warning
- 人机交互 Human-computer interaction
- 自动故障记录 Automatic failure recording



高精度装配能力 **High Level Assembling(HLA)**



经验丰富的结构和工艺技术团队
Experienced construction and process team

Team



超过5年工龄的熟练工人
Skilled worker with more than 5 years of service

Workers



个性化定制优质方案
Personalised optimized programmes

Customized solution

精益生产的管理模式
Management mode of lean production

Lean production



全球研发生产基地

Global R & D and production base



PDU工厂
PDU Plant



汽车电子工厂
Automotive Electronics Plant



变压器工厂
Transformer Plant

医院用SPD
SPD cabinet
for hospitals



医院用储能UPS
Energy storage UPS
for Hospitals

智能模块PDU
Intelligent module PDU

